

Photograph by Hellbusch

Plaudit, AQHA 1,657, registered both as a Quarter Horse and as a Palomino, this son of the Remount stallion King Plaudit (TB) was out of Colorado Queen by Old Nick. He sired numerous Quarter Horse and Palomino foals during his 28 years at stud. Left to right: Joan Harms, Mr. Leon Harms, Mrs. Leon Harms.



Photograph courtesy U.S. Army

Remount stallion King Plaudit (TB) was sired by Plaudit (TB), winner of the 1898 Kentucky Derby, out of Wild Thistle (TB). King Plaudit sired numerous outstanding horses during his career, including Plaudit, AQHA No. 1,657, named for his grandsire.



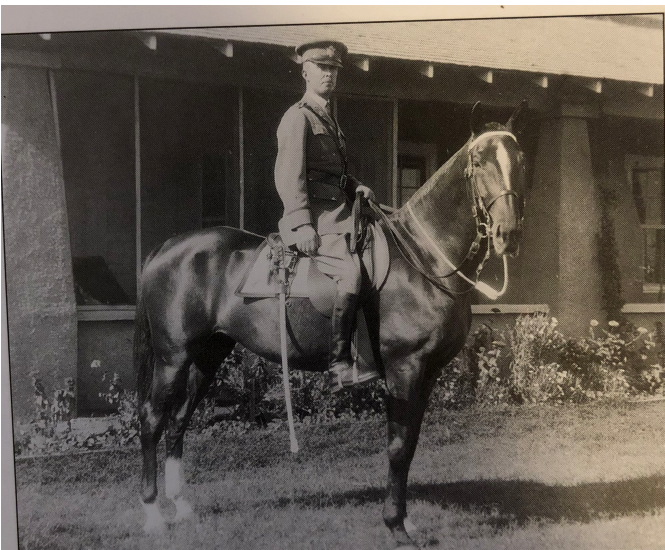
Photograph courtesy The Western Horseman

These pre-World War I, U.S. Army supply wagons with a 6-mule hitch, as well as pack trains, transported goods and supplies in the field.



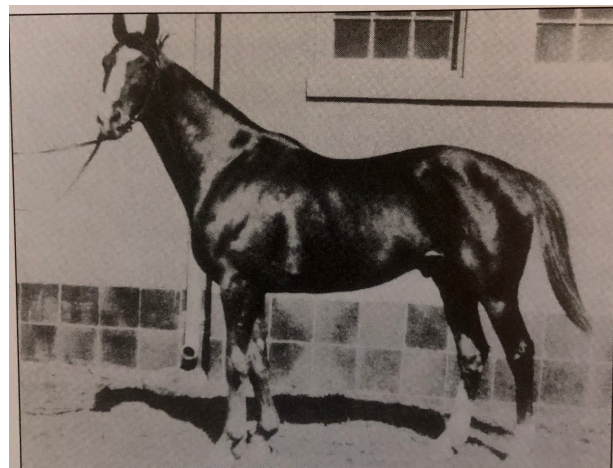
Photograph courtesy The Western Horseman

U.S. Cavalry is shown on patrol, circa 1916. Note the uniformity of the mounts and the equipment they must carry.



Photograph courtesy The Western Horseman

A U.S. Army officer is mounted and ready for garrison duty immediately after World War I. The privately owned officers' chargers were normally several grades above the average troop horse



Photograph courtesy The Western Horseman

Tim McGee (TB), foaled in 1915, sired by McGee, out of Cheek, is